

# Cube Recovery Disc



Please select boot device:

P#: WDC WD30EURS-63SPKY0

Windows Boot Manager (P#: WDC WD30EURS-63SPKY0)

UEFI: \*\*\*\*\*

\*\*\*\*\*

Enter Setup

↑ and ↓ to move selection

ENTER to select boot device

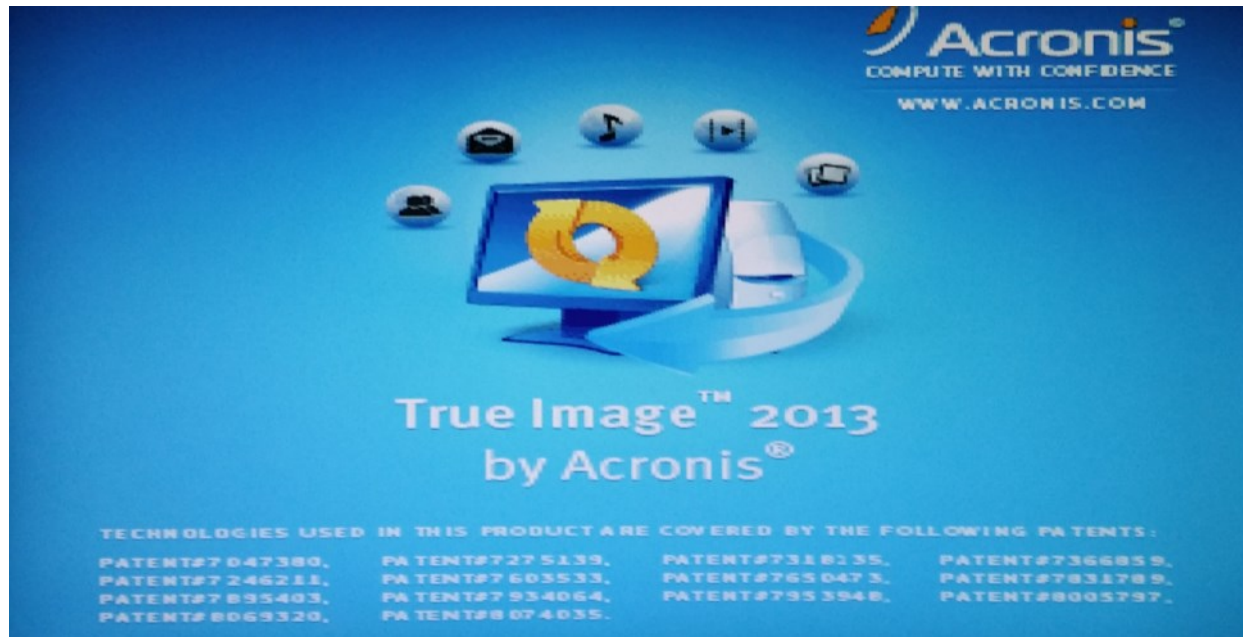
ESC to boot using defaults

1. Press [F7] to select a boot device when boot post splash is displayed

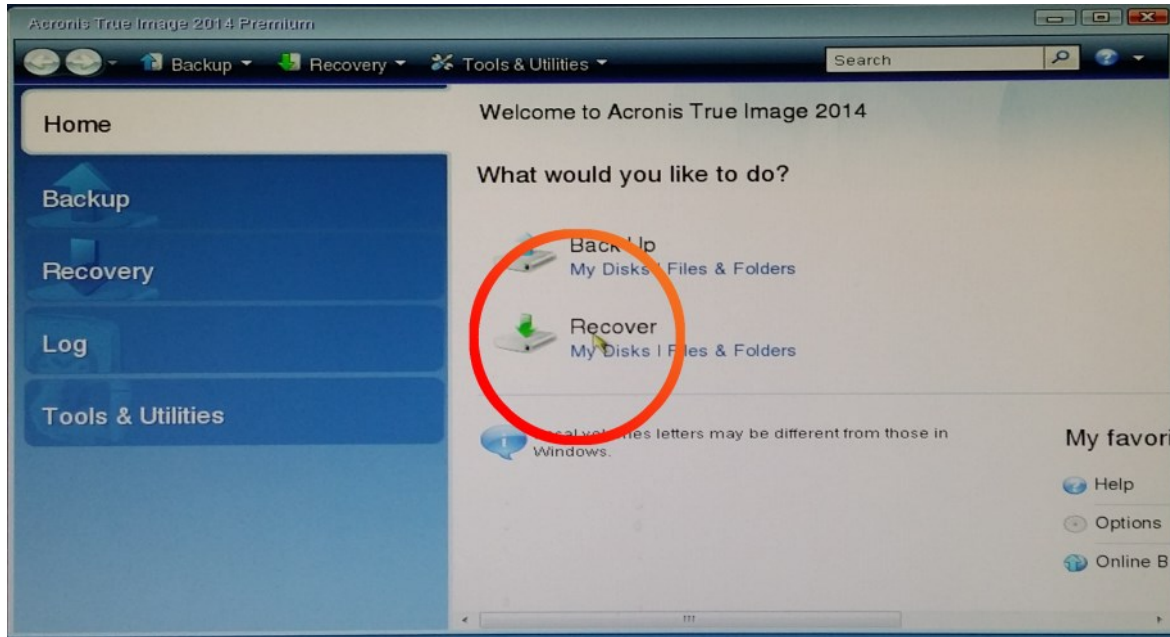
2. Insert Cube Recovery disc



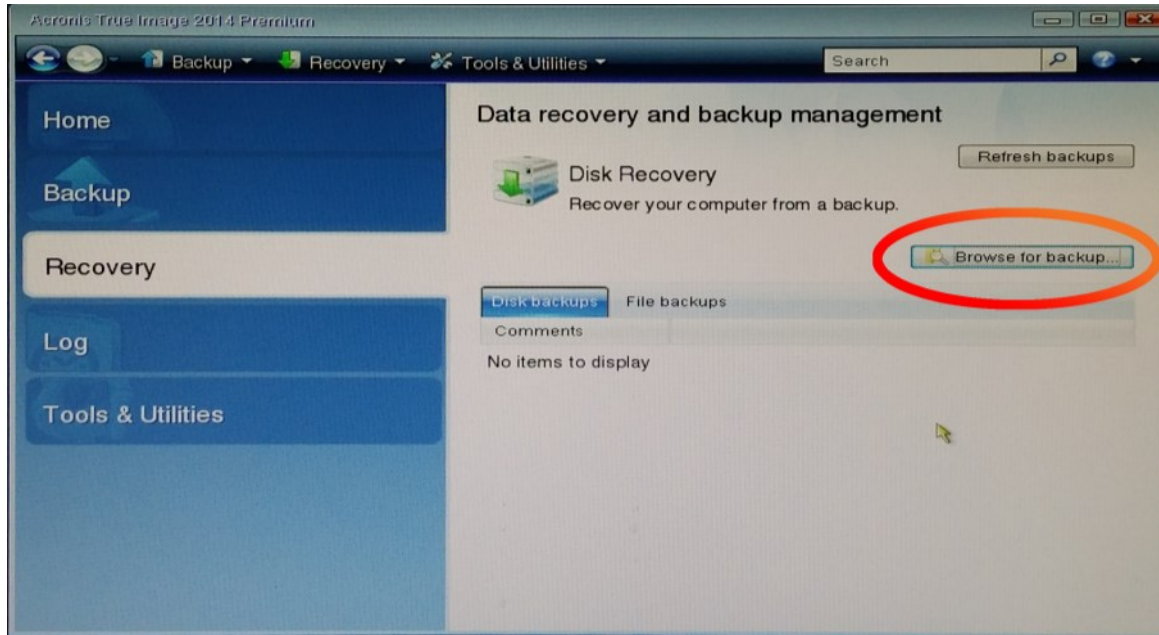
3. Select "Optical Drive" that has Cube Recovery disc is loaded and press enter



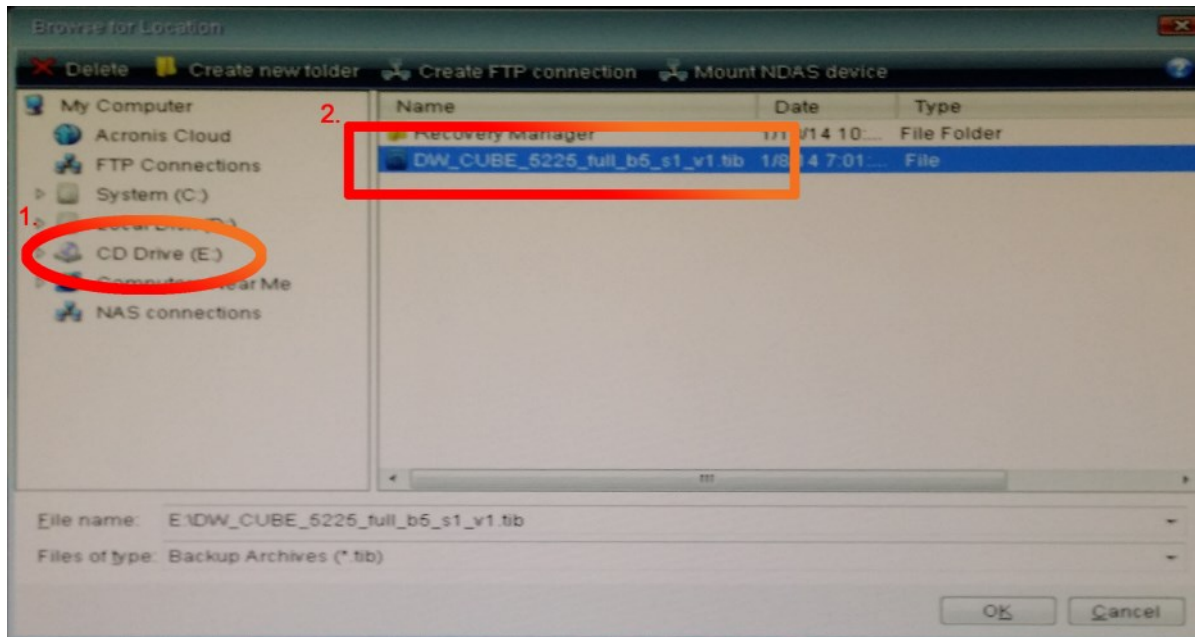
4. Wait while Acronis True Image is loading



5. Once *Acronis True Image* is ready, click **My Disks** under where it says *Recover*



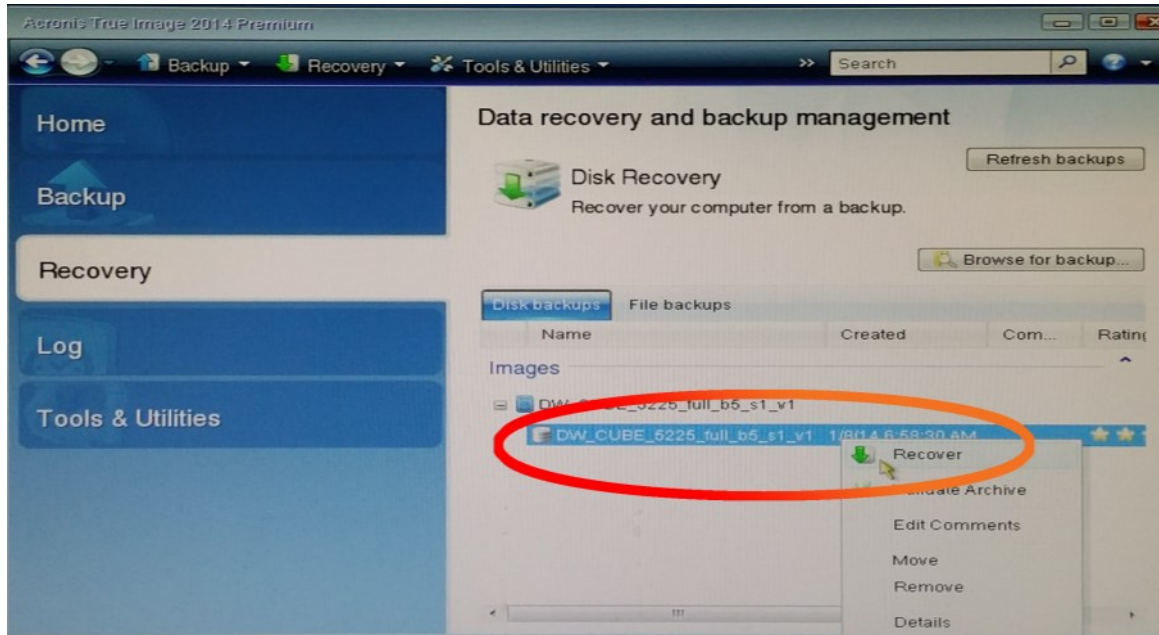
5. Click **Browse for backup** from *Data Recovery and backup management*



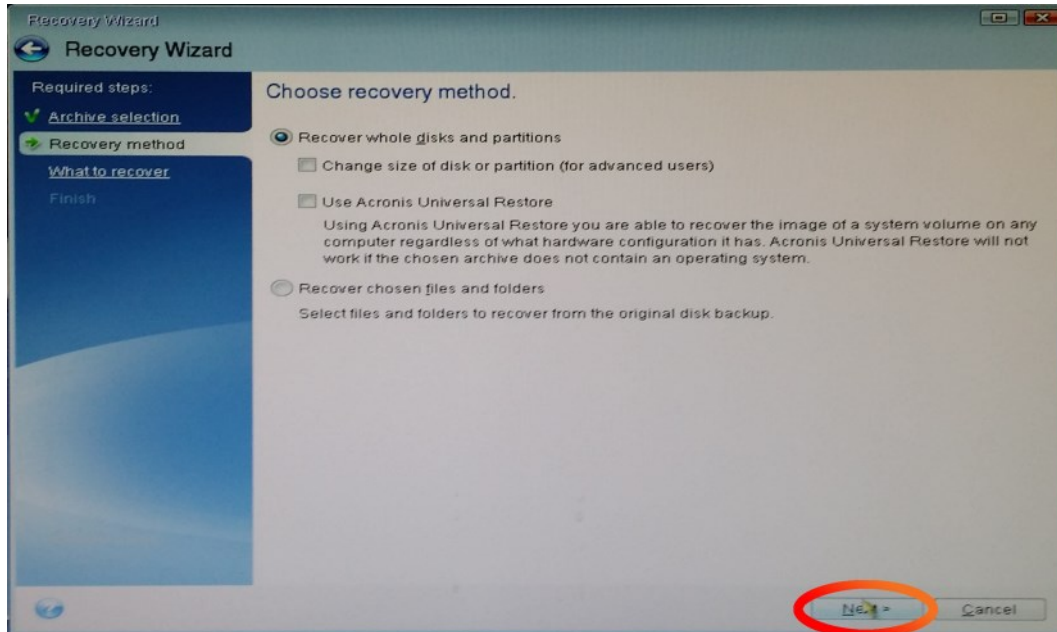
6. From browse window, select CD Drive first and select “DW\_CUBE\_\*\*\*\_full~” then click **OK**

 \*\*\* represents Spectrum build number.





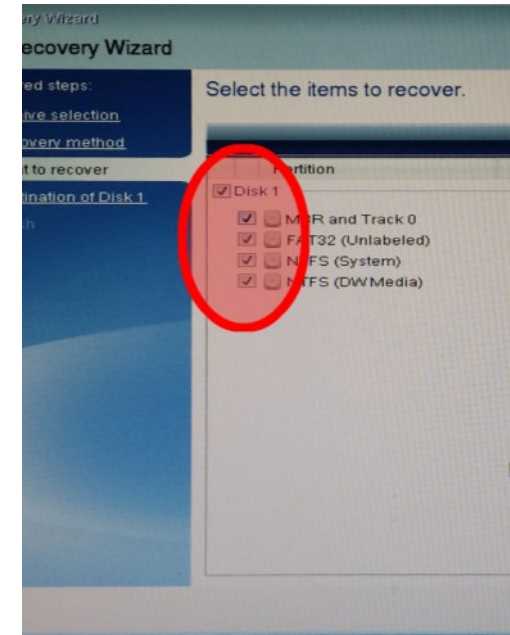
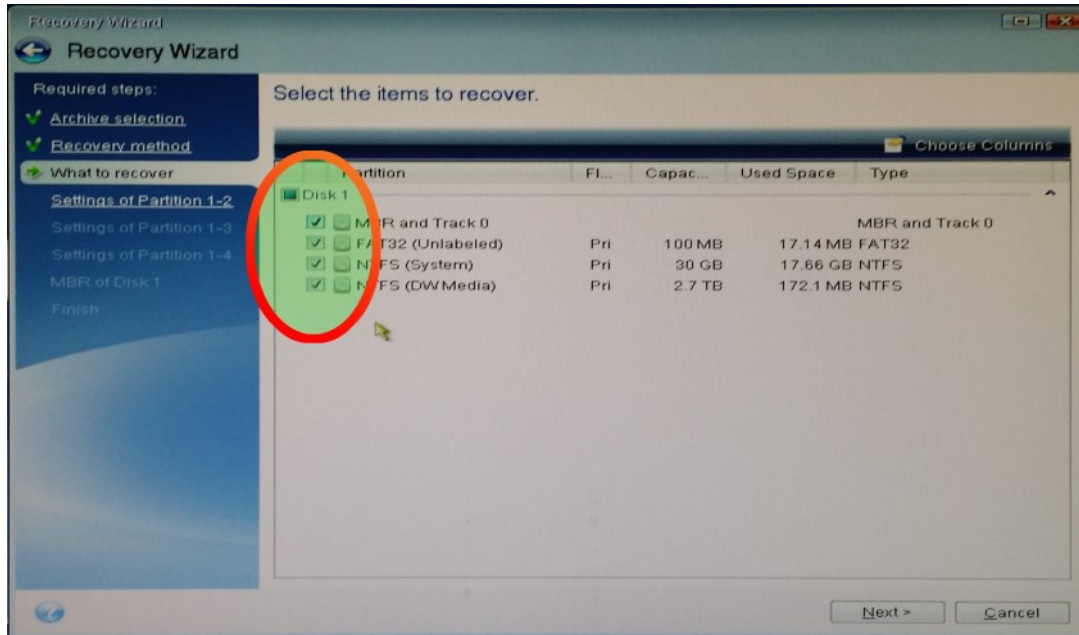
7. Right click loaded image then click **Recover**



8. Click **Next**



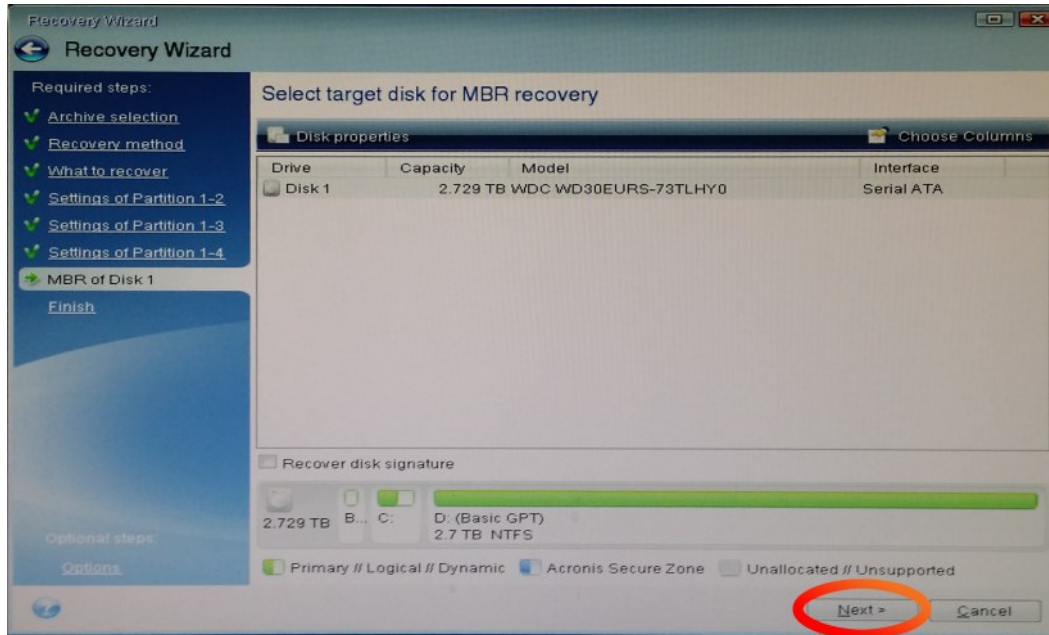
# Cube Recovery Disc



9. Click all checkboxes of each partitions from item selection window

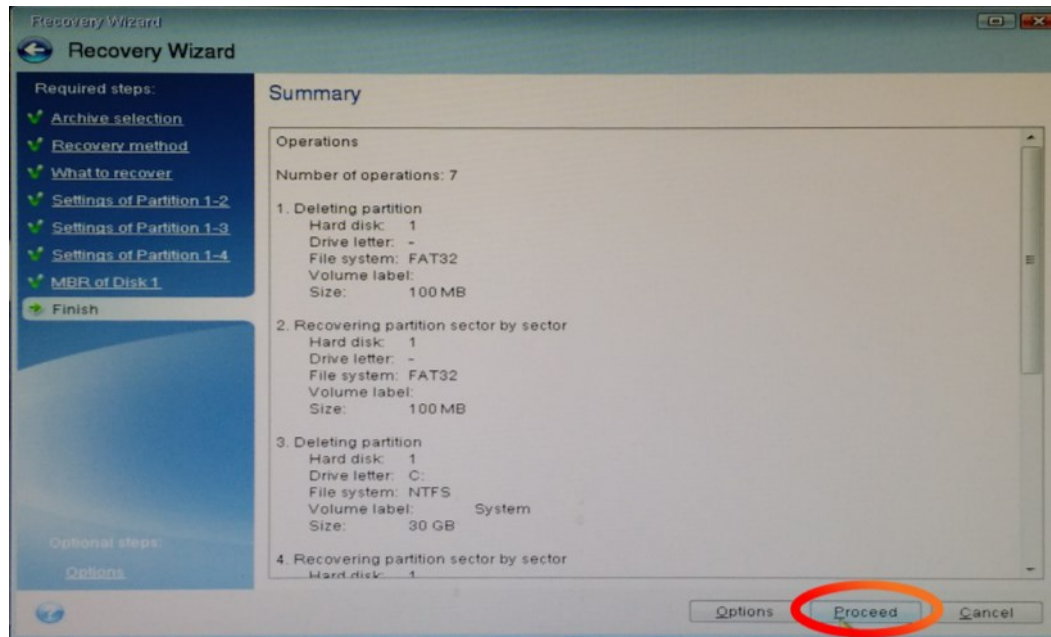
⚠ Do NOT select all partitions by clicking "Select All" checkbox.

It may cause Acronis to block a user from selecting a target disk.

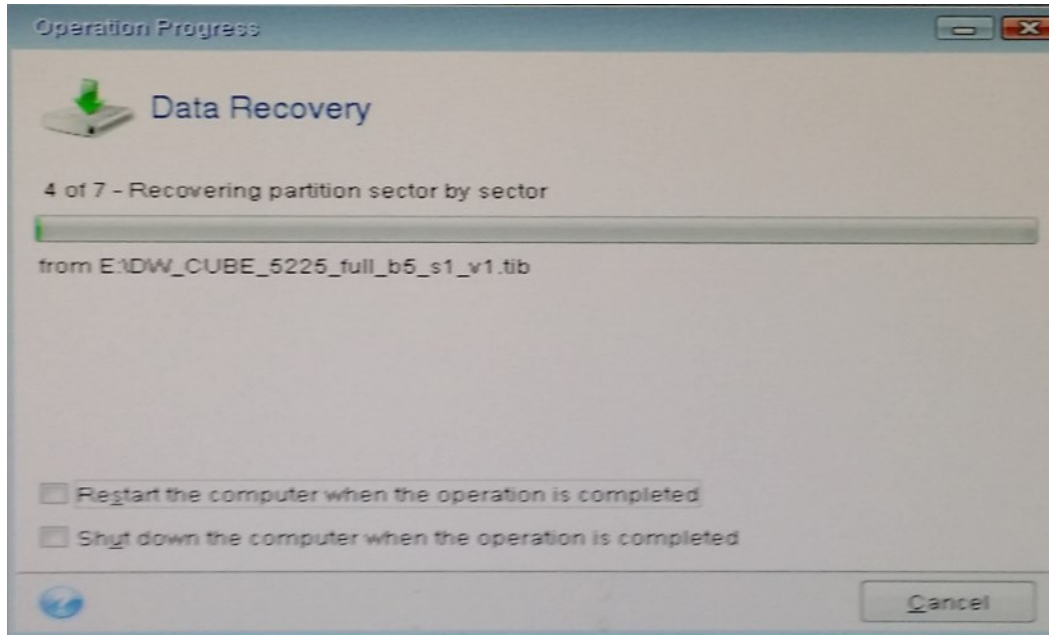


10. Continue to click **Next** until *Summary* window appears

⚠ You do not have to change the size of each partitions as long as target disk is 3TB .



11. Click **Proceed**



11. Wait until recovery is done.

 System will automatically reboot once recovery is complete