

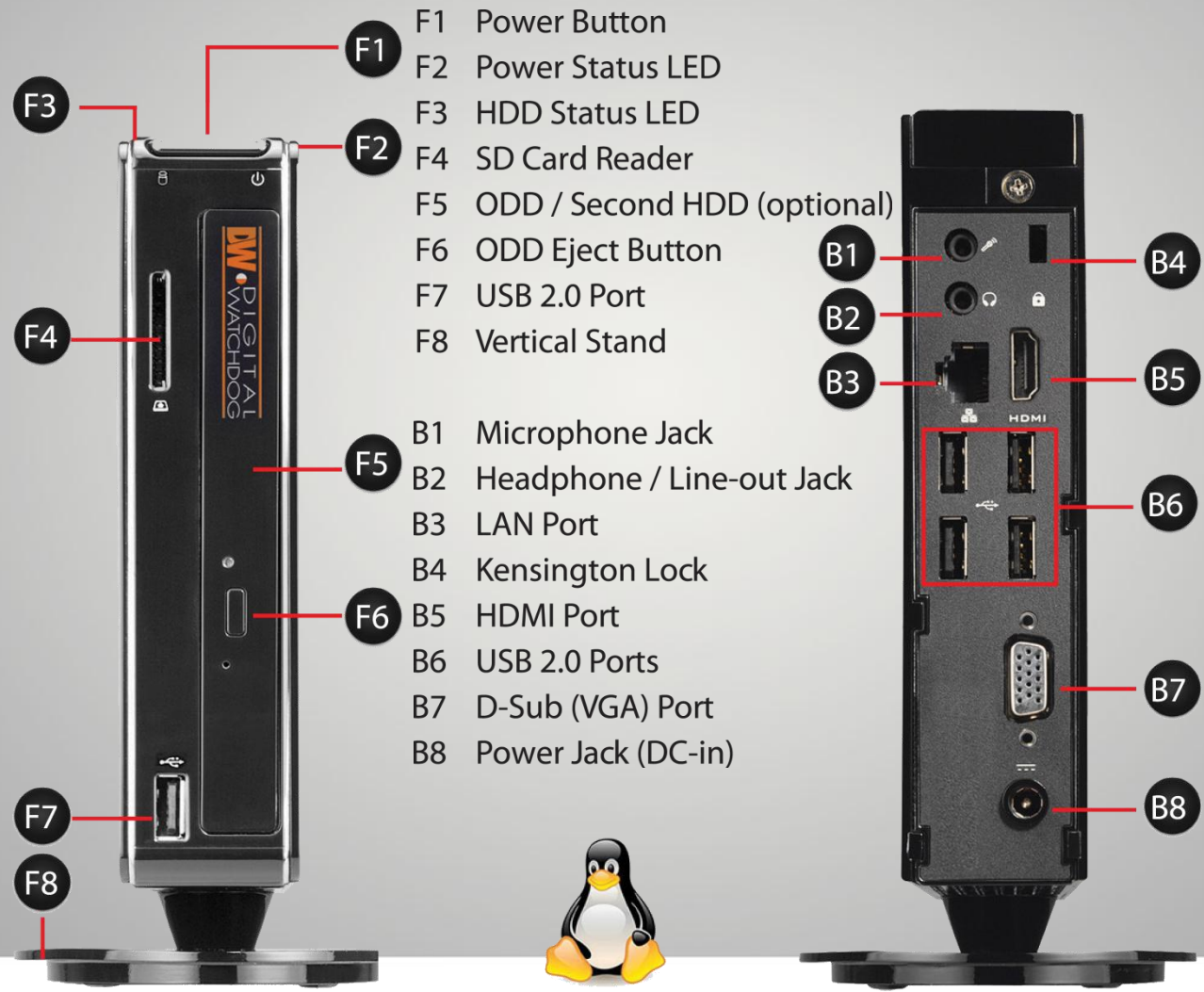


Everything's Digital

Network Surveillance Solutions

How to Merge Multiple Servers
under 1 EC- Blade

Blade Hardware



Linux OS

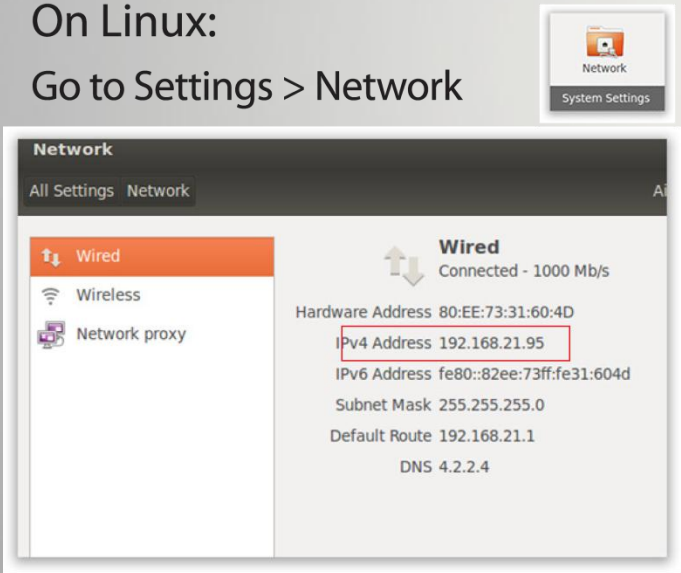
Combining 2 MS under 1 EC

- 1. Select your **PRIMARY** Enterprise Controller
- 2. Find the IP Address & Port Information

Locating your IP address on Windows and Linux

On Linux:

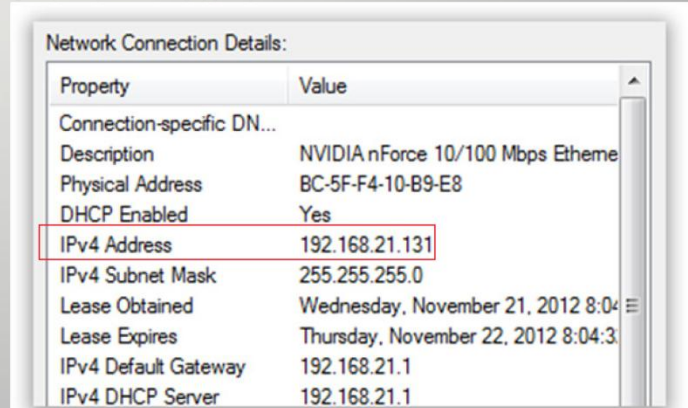
Go to Settings > Network



- PORTS
- 7001: Enterprise Controller
 - 7002: HTTP
 - 7003: RTSP
 - 7004: Proxy

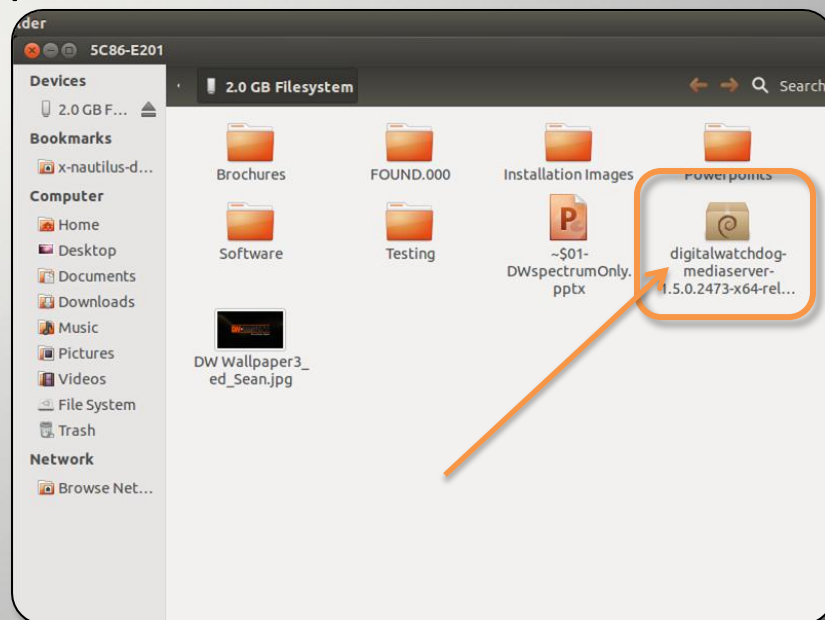
On Windows:

Open Network and Sharing Center
Click on LAN or Wireless Connection
Click on "Details"



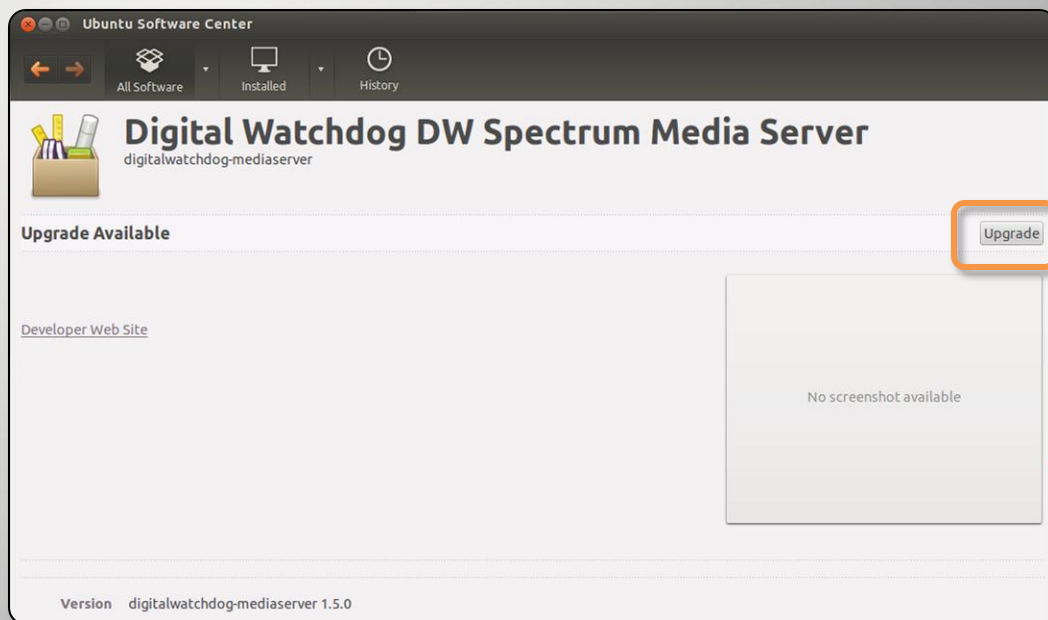
Combining 2 MS under 1 EC- Blade

3. Download the Media Server Linux File to a USB device. Contact Digital Watchdog's Technical Support for more information
4. Go to the **PASSIVE** Media Server (Server that would have only the Media Server on it)
5. Plug in the USB to the Blade. A folder window will appear.
6. Right-click on the Media Server Linux file and select "Open with Ubuntu Software Center"



Combining 2 MS under 1 EC- Blade

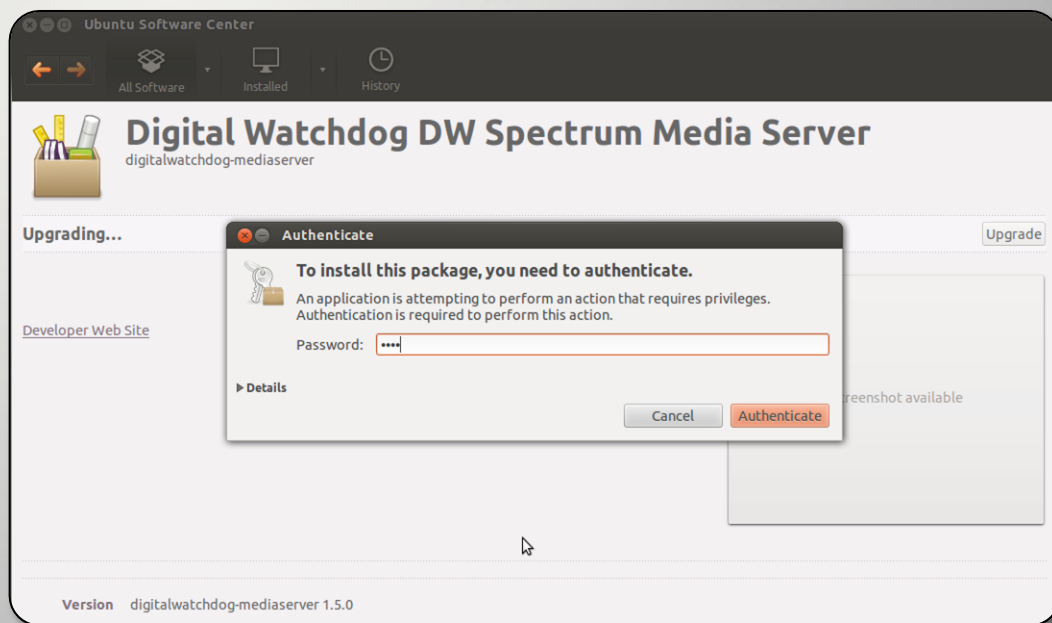
7. Please allow up to a minute for the DW Spectrum Media Server file to populate in the Software Center.
8. When the Media Server File appears, press the Reinstall Button.**



****Make sure there are no clients currently connected to the Blackjack you are reconfiguring.**

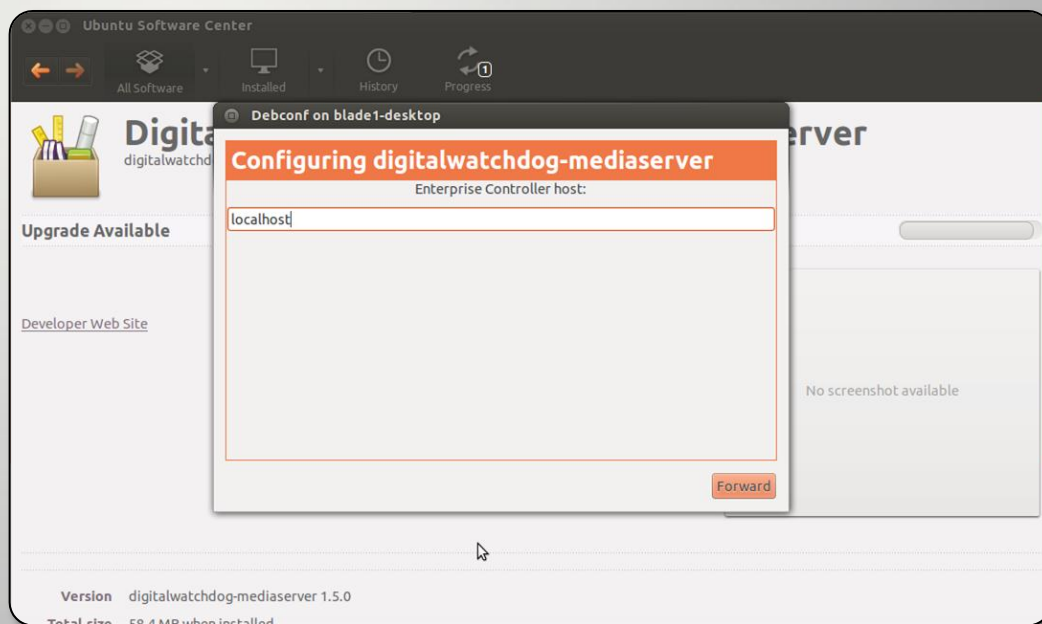
Combining 2 MS under 1 EC- Blade

9. The system will request User authentication before installation. This are the Operating System Login information (Default: 1234)



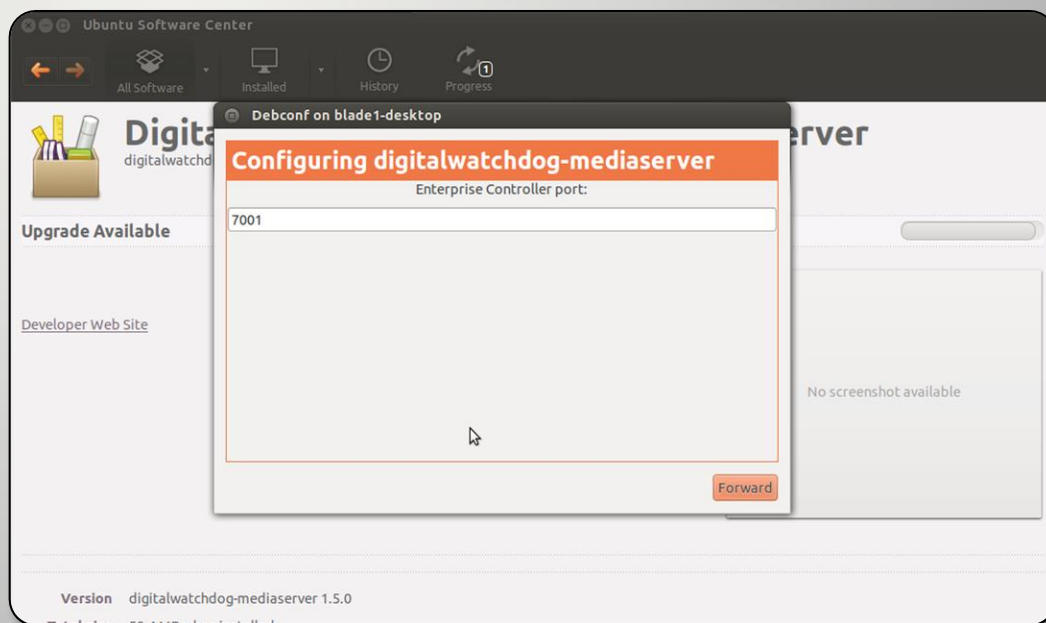
Combining 2 MS under 1 EC- Blade

10. The system will require you to re-enter the Enterprise Controller's credentials for proper configuration.
 - a. Enter the **PRIMARY** EC's IP address instead of 'localhost'



Combining 2 MS under 1 EC- Blade

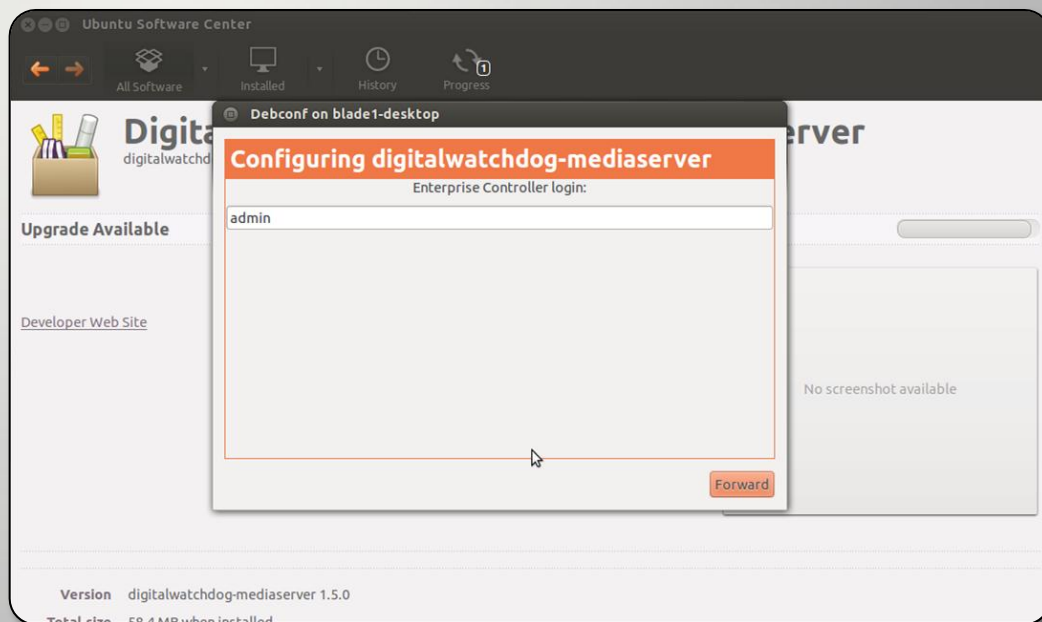
10. The system will require you to re-enter the Enterprise Controller's credentials for proper configuration.
- Enter the **PRIMARY** EC's IP address instead of 'localhost'
 - Enter the **PRIMARY** EC's Port (Default: 7001)



Combining 2 MS under 1 EC- Blade

10. The system will require you to re-enter the Enterprise Controller's credentials for proper configuration.

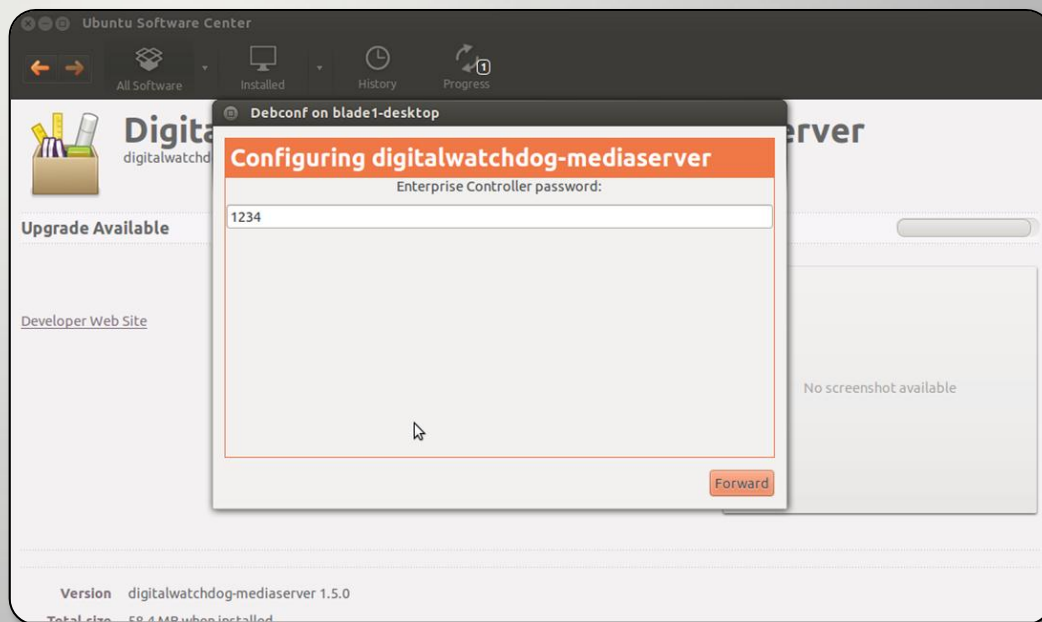
- a. Enter the **PRIMARY** EC's IP address instead of 'localhost'
- b. Enter the **PRIMARY** EC's Port (Default: 7001)
- c. Enter the **PRIMARY** EC's Master admin user name (Default: admin)



Combining 2 MS under 1 EC- Blade

10. The system will require you to re-enter the Enterprise Controller's credentials for proper configuration.

- a. Enter the **PRIMARY** EC's IP address instead of 'localhost'
- b. Enter the **PRIMARY** EC's Port (Default: 7001)
- c. Enter the **PRIMARY** EC's admin user name (Default: admin)
- d. Enter the **PRIMARY** EC's admin password (Default: admin)



Combining 2 MS under 1 EC- Blade

11. When the installation is complete close the Ubuntu Software Center.
12. Repeat these steps for all Blackjacks in the network **EXCEPT FOR THE PRIMARY EC**
13. Allow up to 5 minutes for the DW Spectrum software to re-find the Media Servers and allocate them to the proper EC.

Combining 2 MS under 1 EC- Blade

14. From your Client PC, run the DW Spectrum Software

15. In the login page enter the PRIMARY EC's:

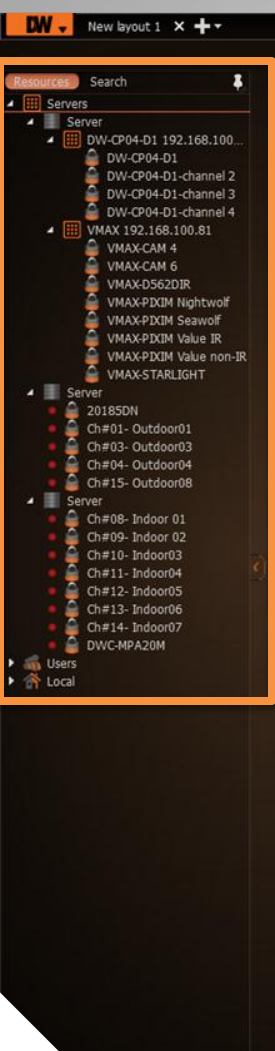
- a. IP address
- b. Port
- c. User
- d. Password

16. Click 'Test' to verify proper connection

17. Click 'Connect'



Combining 2 MS under 1 EC



When connecting to the PRIMARY EC, both Media Servers will appear on the Display Tree.

If both Servers are on the same network, you can assign cameras to each server by 'drag-n-drop'

Blackjack

POWERED BY

DW spectrum



Head Office

5436 W. Crenshaw Street, Tampa, FL 33634

Toll Free: 866.446.3595 Fax: 813.888.9262

Sales Office

16220 Bloomfield Ave.

Cerritos, California, USA 90703